

# DEVELOPMENT FROM 1998 TO 2009

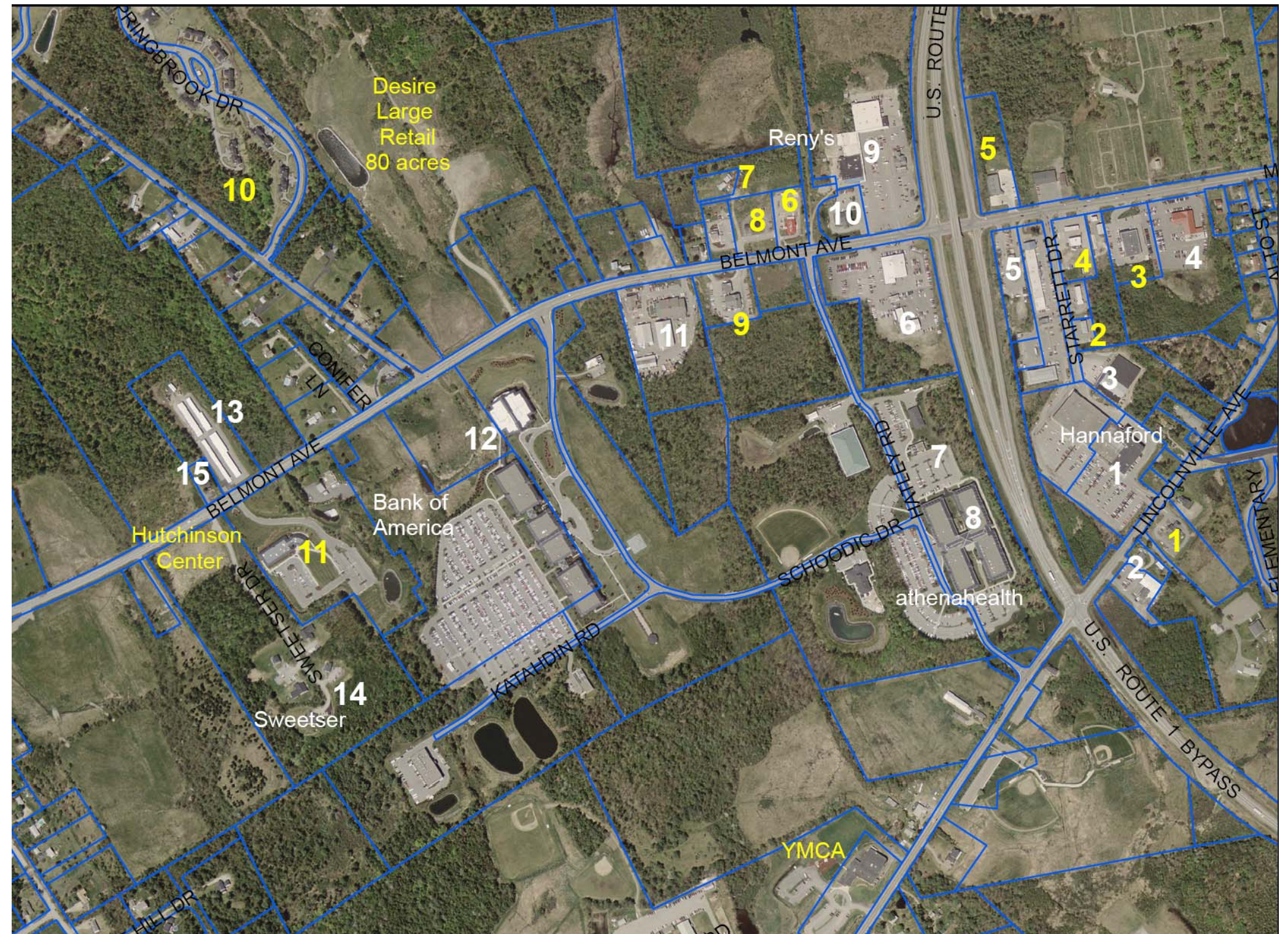
## CITY OF BELFAST ROUTE 3: US ROUTE 1 INTERSECTION AREA

### New Development (Properties Numbered in Yellow on Map)

1. Downeast Federal Credit Union: Constructed new building.
2. Quick Stop Oil Change.
3. Rite Aid Pharmacy (about 10,500 sf)
4. Walgreen Pharmacy (about 14,500 sf). Pursuing final approval from Belfast Planning Board. Anticipate construction in January 2010 with opening in September 2010. Replaces existing Big Apple & C.N. Brown use.
5. Auto Zone (about 7,500 sf)
6. Pizza Hut
7. Goodwill (about 10,500 sf). Also have Planning Board approval to construct an office or similar use on same property, about 4,000 sf.
8. Camden National Bank, which was originally approved for Union Trust.
9. Dead River & Wendy's
10. Spring Brook Estates Condominiums. 46 housing units; duplexes, four-plexes & six-plexes. Originally constructed by MBNA as employee housing.
11. Hutchinson Center. Original facility constructed in 1999. New wing which will double size of facility is scheduled for opening.

### Development Which Existed in 1998 and Which Was Expanded (Properties Numbered in White on the Map)

1. Hannaford. Added about 11,000 sf in new floor area in 2007. Hannaford is now 56,000 sf. Also, Ocean State Job Lots now occupies the former Ames store (about 44,000 sf).
2. Family Dollar & Dirigo Glass occupy a building that was erected in 1999. Redemption center in a separate small building on this lot.
3. Foster's Pet Shop, Aaron's, Sears & Subway occupy building formerly used by Crowe Rope. Extensive renovation of existing structure to accommodate retail use (about 18,000 sf)
4. Quirk Motors (formerly Kallis Ford). Expanded size of show room and repair facility on the site.
5. McDonald's Restaurant. Plans to demolish the existing facility in the fall of 2009 and to construct a new McDonald's Restaurant that is the same size as the current facility.
6. Dutch Chevrolet. Constructed the building in which the collision center is located.
7. Corner Spring Montessori School. Leasing space from Athenahealth, inc; 5,000 sf separate building which was originally constructed by MBNA in 1995.
8. Athenahealth, inc. Purchased phase I of the original MBNA complex from Bank of America in 2007. About 140,000 sf of space for office operations.
9. Reny's has completed a 17,000 sf expansion to the existing store which is now nearly fully occupied.
10. Bangor Savings Bank. Constructed an addition to the facility in 2005.
11. EBS Building Supply. Constructed additional warehouse space since 1998.
12. MBNA, in 1999, constructed the last of its major office buildings that were part of the phase II expansion. Bank of America now leases these facilities from a property holding company. Over 350,000 sf of office space in phase II.
13. Self-Storage Facility. Expanded around 2005.
14. Sweetser Homes. Constructed 4 housing facilities for its students in 2000.
15. The Holistic Vet. Occupied a former single-family residence.



Source: City of Belfast, Planning Department , May 2009