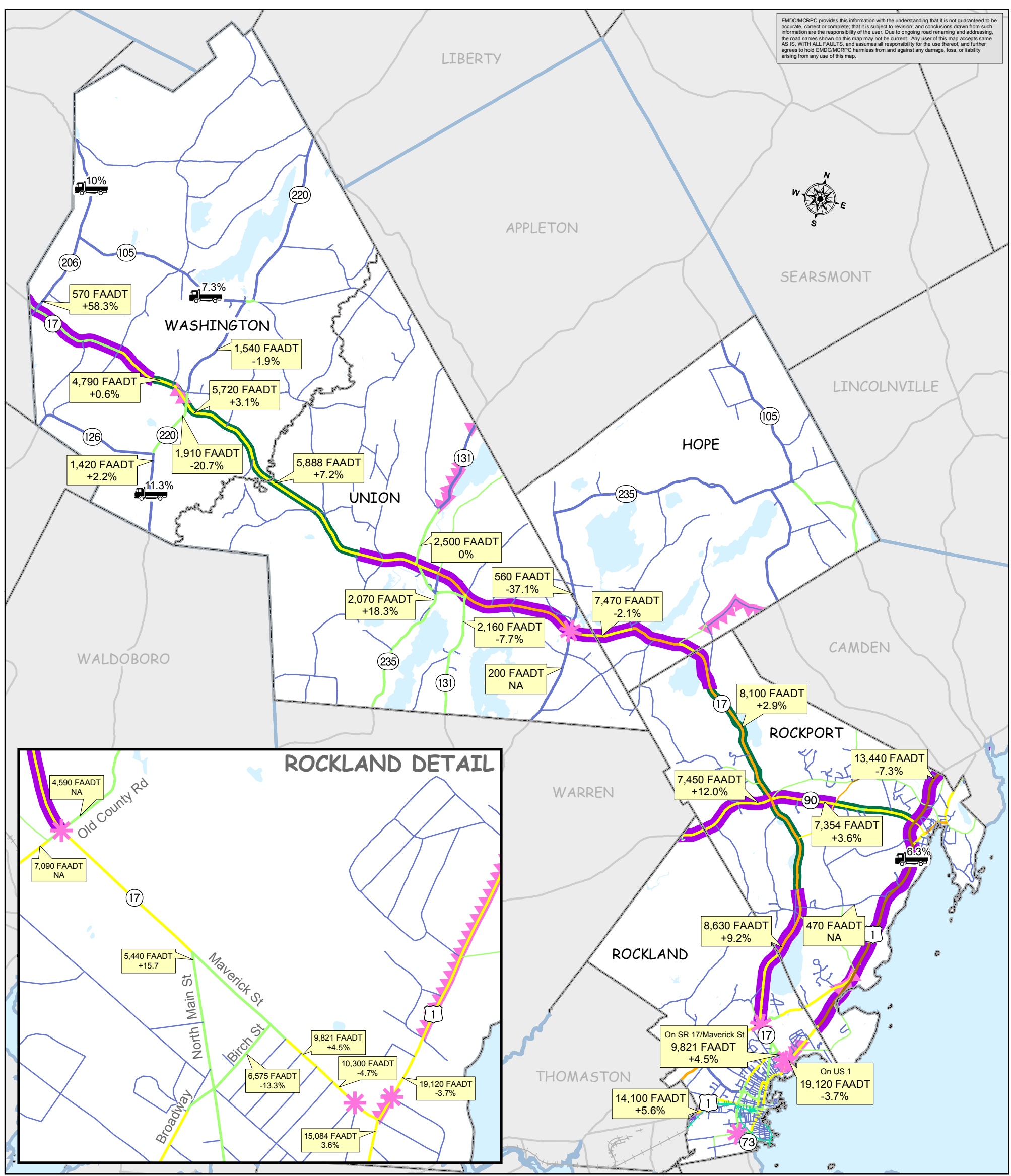


EADC/MCRPC provides this information with the understanding that it is not guaranteed to be accurate, correct or complete; that it is subject to revision; and conclusions drawn from such information are the responsibility of the user. Due to ongoing road renaming and addressing, the road names shown on this map may not be current. Any user of this map accepts same AS IS, WITH ALL FAULTS, and assumes all responsibility for the use thereof, and further agrees to hold EADC/MCRPC harmless from and against any damage, loss, or liability arising from any use of this map.



MIDCOAST STATE ROUTE 17 CORRIDOR TRANSPORTATION

LEGEND

- Safe Handling Rail, Inc./State of Maine Owned
- Mobility Corridor (2004)
- Retrograde Arterial (2004)

HIGH CRASH LOCATIONS *

- HCL Points (Nodes - 2005)
- HCL Lengths of Roadway (Links - 2005)

* High Crash Locations have 8 or more crashes within 3 years.

Level of Service is a qualitative measure that characterizes operational conditions within a traffic stream and includes speed, travel times, freedom to maneuver, traffic interruptions, and the perceptions of motorists and passengers. There are six levels of service, given letter designations from A to F, with LOS A representing the best operating conditions and LOS F the worst. LOS E is defined as the maximum flow or capacity of a system. For most purposes, however, a level of C or D is usually used as the maximum acceptable volume.

MDOT's Level of Service data is meant for system analysis and should not be substituted for an engineering study of a specific corridor or segment of roadway which includes consideration and verification of all factors that affect the LOS value of the subject facility.

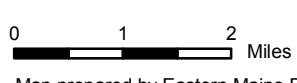
TRAFFIC VOLUMES

7,354 FAADT 3.6% Factored Annual Average Daily Traffic in 2005 Percent change since 2000

LEVEL OF SERVICE (LOS - 2005)

- A
- B
- C
- D
- E

LOS indicated along center of roadway.



Map prepared by Eastern Maine Development Corporation
Sources: MEDOT and MEGIS
Map revised: May, 2008

MID-COAST
REGIONAL PLANNING COMMISSION

www.midcoastplanning.org - www.emdc.org
(207) 594-2299 ~ (207) 942-6389

10% Percent of Heavy Trucks in 2005.